



PROGRESS

SEPTEMBER 2025: VOL. 32, NO. 9

THIS ISSUE:

FIRST FEST
Family Reunion
Sept 7 at 9:30am

PATH TO DISCIPLESHIP
Learning the Way:
Disciples as Students

JOIN OUR
DISCIPLESHIP COURSE
AT FIRST
Starting Oct 12

RAISERIGHT IS
COMING TO FIRST
A Simple Way To Support Our
Ministry

ANOTHER MEMORABLE
FAIR WEEK
Special Thank You To Volunteers



MISSION: Reach, Nourish, and
Empower people with the Good
News of Jesus Christ!

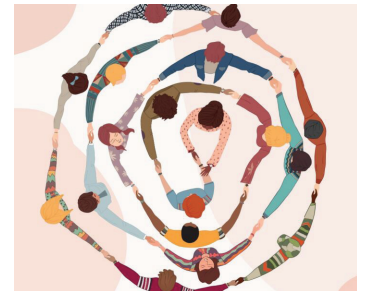
WHAT'S YOUR FAVORITE TEAM?

Throughout the past year, leaders from the FLC Council, staff, and our six program boards have met regularly to discern what kind of organizational structure would best serve the current needs of our congregation.

We have sensed the need for an organization that is more flexible than the formal board structure has allowed. At the same time, we want to maintain accountability and good communication. Our discussions have led us to a team structure.

Our vision for a team-based structure starts with a leader for each team who will be joined by a liaison from the Council and a staff representative. The rest of each core team will be a flexible number of people who each make a renewable one-year commitment. This core team will be responsible for decision-making, reporting, and financial accountability. Expanding from that core, each team will be free to include others who want to work on specific events or short-term projects.

One of our primary goals with this new team structure is to align our organization with the congregation's vision. The goals of FLC's vision are to deepen and expand discipleship, inclusion of others, engagement in ministry,



612 N Randall Ave, Janesville, WI 53545

608.752.7434 www.flcj.org

Office Hours: Monday-Thursday 8:30am-4pm; Friday 8:30am-Noon



Pastor Michael

mmueller@flcj.org
262.930.2072

and relational connections, while focusing our attention outward toward the wider community. New ministry teams will reflect these priorities:

- Discipleship Development
- Relationship Building (within the FLC community)
- Community Connections (building partnerships in Janesville/Rock County)
- Inclusion & Integration
- Youth and Young Family Engagement

In addition to these ministry-related teams, we are building three more teams to work on basic operations that will support our ministry goals:

- Financial Strategy and Development
- Buildings and Grounds
- Communications Strategy



GENUINELY
INCLUSIVE



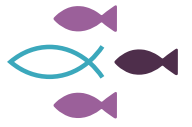
THOROUGHLY
ENGAGED



EXTERNALLY
FOCUSED



RELATIONALLY
CENTERED



LIVING LIKE
CHRIST

At the heart of this structural revision is the goal of becoming a community of disciples who are intentional about learning to live like Christ. That means learning to trust the love and healing power of God, to see the world with the eyes of Jesus, to welcome others with Christ-like generosity, to act boldly in honoring one another, building up community, and caring for the whole God-created world. Learning to live together like Christ is a **BIG GOAL** that will lead us to reach others, nourish them in a community of gospel love, and empower them also to make disciples of Jesus.

I will encourage each of the new teams to be a community of practice. Rather than being simply task-driven, each team can become a small discipleship community. The work they are called to do together will best serve the greater goal if it flows out from their own experience of learning to live together as disciples.

I am grateful for this congregation's willingness to try new things.

Throughout the discernment process, our leaders have demonstrated an openness to change and a willingness to think and act in new ways.

The first year of implementing this

structure will be a learning experience. We'll discover what works well and what doesn't. Nothing will be written in stone, so that adjustments can be made, as needed.

The transition this fall will likely be a bit messy. The new teams will be forming and learning to work together. They will receive fresh direction and priorities, but the current boards will also need to hand off on-going projects and work that is in progress. We'll need some patience as we find our way together.

Amid the challenges that come with any transition, I am hearing excitement and sensing new energy for the future. Thank you to all the leaders whose good work has brought us to this point. I look forward to discovering with you what the Spirit will do with us next! 🙏

*Learning to live
together like
Christ is a
big goal that
will lead us to
reach others,
nourish them
in a community
of gospel love,
and empower
them also to
make disciples
of Jesus.*

PATH TO DISCIPLESHIP

Learning the Way: Disciples as Students



The disciples, ordinary people from diverse backgrounds, learned from Jesus through his actions, interactions, and reactions, they were his apprentices, just like us. No matter our age, the journey of learning and growing never stops.

Discipleship, or an apprenticeship with Jesus, is a journey to become more like him learning to live, think, and act as he did through a transformation of heart and action, not just head knowledge.

“Jesus saw the crowds. So he went up a mountainside and sat down. His disciples came to him. Then he began to teach them.” Matthew 5:1-2

I challenge you to become a student of Jesus. To continue or start your apprenticeship today.

Here's a start: Matthew 5:3-16

Begin by prayerfully reading Matthew and asking God to illuminate its meaning. Consider finding myself, a mentor or a small group to discuss this scripture. ⑦

—Eric Engen

RAISERIGHT

Coming To First

RaiseRight is an easy and effective way for churches to raise funds without asking members to spend extra money. It works by offering gift cards for everyday purchases—like groceries, gas, dining, and retail shopping—from major national and local retailers.

Church members buy these gift cards at face value through the church's RaiseRight program. The church then receives a rebate from the retailer, typically ranging from 2% to 15%. For example, purchasing a \$100 grocery gift card might earn the church \$5. While that may seem small, consistent use by multiple families can generate significant income over time.

What makes RaiseRight ideal for churches is that it turns everyday spending into ongoing support for ministry—without selling products or planning events. Many retailers now offer digital cards, making it easier than ever to participate.

Funds raised will be held in a Memorial Fund to be used for future projects. More info will be available soon. ⑦

THANK YOU PIE BAKERS



I want to take this opportunity to thank both Thrivent (for the Action Team funds) and all of the volunteers that either donated ingredients (especially rhubarb, cherries and raspberries), mixed and rolled out 276 pie crusts, or personally assembled some of the 123 pies this year. It was truly a group effort! Not only were we making pies for the Rock County Fair Food Booth and whole pie sale, but we also made pies for First Fest and the Family Holiday Fair lunchroom.

Thank you for your dedicated participation in the pie-assembly workstations, and cleaning up or washing kitchen towels, aprons, and dishcloths. Our pie ministry at FLC reaches many people in our community. We received many positive comments on our awesome homemade pies. ☺

—Kathy Dorscheid

ANOTHER MEMORABLE FAIR WEEK

Another fair week has come and gone, and once again I need to thank so many people for all of their time and effort. I especially want to acknowledge three new Fair Task Force members that really stepped up and provided invaluable support: Jarod Wasson, Lexi Frank and Becky Heider. Eric again shopped for food and food-booth supplies, and he and Renee organized a crew to bring the equipment over and set up the food booth. They also arranged for a team to pound stakes, string flags, hang fencing, and place signs. Many of you donated soda and water. And as usual, Renee spent many hours calling potential volunteers.

With the generous donation of your time, 161 of you covered the shifts in the food booth and parking lot, averaging around 8 hours a person—and that doesn't even include those of you who helped make pies!

The Fair Task Force and First Lutheran thank everyone who supported the effort in any capacity, for their generous giving spirit.

Families and friends shared time together, and we made new friends. We had children and grandchildren taking food orders, waving cars to parking spots, and baking pies. For the community, we provided nearby parking and affordable food on the fairgrounds.

The overall Fair attendance was down somewhat this year, so our proceeds from the parking lot were also down a bit, coming in at \$25,990, which went into First Lutheran's General Fund. The food booth profit was \$2,207, which will be equally split between the Boys and Girls Club, the Children's Museum of Rock County, and First Lutheran itself, \$735 each.

As we have come to expect, this was all a lot of work, but we showed once again that we are a congregation that shows up for our church family and our community. Thank you! ☺

—Tom Dorscheid
Fair Task Force Chairman



THE VOICE

A Living Part Of Our Humanity



Amy Hartsough (Dir. of Music) is offering a voice and breathwork retreat on Saturday, Sept. 27, 10am-12:30pm. The retreat will be held at Earthsong, located at 2214 Kennedy Rd, Janesville. The class is in their workshop room at the back of the store. They have a beautiful small labyrinth just outside the classroom, that the group will be welcome to use.

Because of the room size and nature of the retreat, the group is limited to 20 people.

SIGN-UP: tinyurl.com/34fpwpsm

Please note: the cost is *FREE*.

A bit of history:

Amy has formally studied voice since she was ten years old. She has performed in concert venues throughout western Europe and the US, and studied (and continues to study) with masters of this personal and unique instrument. She sang and danced African songs with a teacher from Tanzania, sang opera in North Carolina, and performed Avant Garde music (sing/speaking, acting, using a cartoon as notation, etc.) in London, UK. As a child, she sang Appalachian folk music and peace movement songs with her parents. In London as well as in North Carolina, Amy also studied the Alexander Technique (learning the

physicality of one's own body, while improving posture and relaxation during acting/playing an instrument/singing). She found it to be very helpful in grounding herself while singing.

When she sings, whether on a stage or at a bedside, with 100 people watching or one person singing with her, she feels she is a part of something bigger than herself. She feels connected to God, to herself, to the other musicians, and also to the listeners – that they are sharing together a divine and transient experience. She feels this is very true of choral and ensemble singing/playing as well.

During this retreat, Amy will share breathing and vocal techniques, warm ups, both visual and audio resources, and other tips with the group. She will also offer a meditative moment during the retreat, where people can walk a labyrinth on the property, or sit quietly. The group will learn an easy choral song to sing together at the end, to bring the retreat to a natural close.

Afterwards, Amy welcomes the group to have lunch together, those who would like! The retreat cost is *FREE*, just pay your own way at lunch.

She's excited to see you there! ☺

CONFIRMATION ORIENTATION

Sunday, Sept 15



Please save the date for an important confirmation orientation. Come meet the staff, check out the schedule and topics, and see what's up for the newest confirmation season.

Grades 7 & 8
Sunday, Sept 14
10:45am-Noon
Chapel

Grade 9
Sunday, Sept 14
4-5pm
Chapel

For more information please contact Renee Engen at 608.359.9685 or rengen@flcj.org ☺

VERSITI BLOOD DRIVE

Sept 16 from
2-8pm



To all of my “Red Blooded” First Lutheran fellow members,

I donated blood on June 12 at our church. I knew about the Red Cross, but Versiti Blood Centers was new to me. Where the Red Cross usually donates blood during disasters, Versiti donates to Wisconsin area hospitals in need. The staff was amazing, and it was so easy! It only took an hour of my day to help save some lives. They went to so much work to set up in Fellowship Hall, and I hoped they would be busier.

I received a thank you, what my blood type is, and the day and hospital my blood went to!

Please consider donating at their next visit to First Lutheran. They will be here Tues, Sept 16, 2-8pm. I already have my appointment, hope to see you there! ☺

—Laurie Lipke

JOIN OUR DISCIPLESHIP COURSE AT FIRST

We invite you to join us for First Steps, a welcoming and engaging discipleship course designed to help you grow in your relationship with Jesus, deepen your understanding of the Christian faith, and find your place in the life of the church. No matter where you are on your spiritual journey, these classes offer a solid foundation and a supportive community to walk alongside you.

Whether you are new to church, new to First Lutheran, a longtime member, or simply curious about growing in your faith, First Steps is for you.

Session 1 - A Way Worth Living Oct 12, 10:45am-12:15pm

We are people formed by grace and called into the life we see in Jesus. This session explores what it means to walk by faith and live as part of God’s ongoing work in the world.

Session 2 - The Lutheran Way Oct 26, 10:45am-12:15pm

Rooted in Scripture and centered in the gospel, the Lutheran tradition invites us to live freely and trust boldly in God’s grace. This session explores how God’s promises, not our performance, shape a life of faith, freedom, and purpose.

Session 3 - Our Church, Our Mission Nov 9, 10:45am-12:15pm

At First Lutheran, we are a work in progress—gathered in love, shaped by Word and Sacrament, and sent to serve. This session shares our mission, values, and how we live them out together.

Session 4 - Made to Make A Difference Nov 23, 10:45am-12:15pm

We believe generosity is a way of life. In this session, we’ll talk about how your time, skills, and presence can support the mission of First Lutheran and help shape our shared future.

One-Day Retreat Option at Lutherdale Feb 21, 9am-3pm

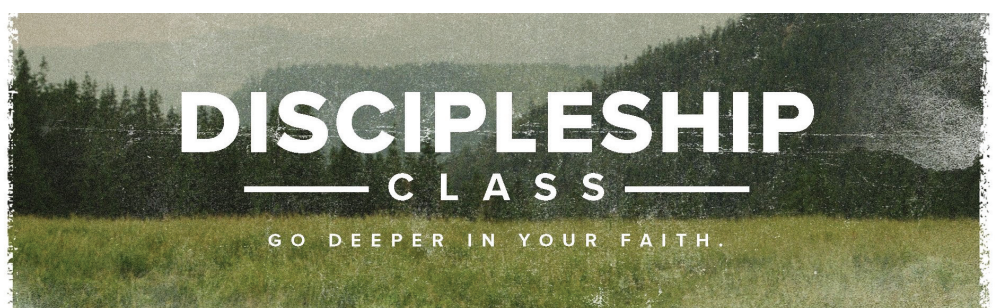
Prefer to take all four sessions in one day? Join us for a special retreat experience where we’ll explore each class together, enjoy community, and share a meal—lunch included

Come as you are. Together we will learn to walk more closely with Jesus.

Please use the QR code to register or contact Renee at 608.359.9685 or rengen@flcj.org. ☺



SCAN ME





DAY CAMP REUNION

The Wild Robot Watch Party And Sunday School Open House

Reconnect with your Day Camp friends and make some new ones on Sept 6, as we celebrate our time at Day Camp and get excited for a new year at Sunday School! Didn't make it to Day Camp this year? No problem. This event is still for you! Bring the whole family! Everyone is welcome. Here's what's happening:

- **4:30pm: Sunday School Open House** - Meet your classroom teachers, check out your space, and get a sneak peek of the year ahead!
- **5pm: Pizza Dinner** - Enjoy delicious pizza with friends and family.

- **5:20pm: Vocal Voyage Rehearsal**
- **5:30pm: The Wild Robot Watch Party** - Bring a lawn chair or sleeping bag and get cozy for a movie in the Chapel.

*Prizes & Giveaways | Free Pizza
Fun for All Ages*

Important: A parent or adult must attend with each child.

Contact Renee for more information,
rengen@flcj.org ⑦

FAMILY HOLIDAY FAIR DONATIONS

Baked goods are needed for the Family Holiday Fair happening on October 18. We ask that all cookies, bars, breads, muffins, or any other baked goods be brought to the church Friday afternoon, October 17.

We are also collecting bottled water, Coke, Diet Coke, Mt. Dew, Root Beer, Sprite, Diet Sprite, Dr Pepper, and lemonade.

For the wine pull, we ask for a bottle of wine with a value of at least \$10. We appreciate all donations. Thank you! ⑦

REASSEMBLING AS ONE

A Celebration of Unity



In a world that often pulls us in different directions, there's something deeply powerful about coming together as one. At First Lutheran, we are reassembling as one—a community of individuals with shared faith, purpose, and love. Whether we've been apart for a season or simply navigating life's complexities, there's a beautiful strength in unity.

Through worship, fellowship, and service, we reconnect, renew our bonds, and embrace the power of collective purpose. Reassembling as one isn't just about physical presence; it's about spiritual alignment and shared commitment to love, serve, and grow together in faith. ①



FIRS

First Fest: Sept 7 Starting At 9:30am

What an incredible year it's been! First Lutheran has welcomed new members, celebrated baptisms of babies and others, and has set the stage for another exciting year of Sunday morning education. We've kicked off a new Women's Bible study, gathered to Break Bread in homes and restaurants, wrapped up Day Camp and Mission trips, enjoyed outdoor summer worship, served together at the fair—and that's just the beginning! Now it's time to come together and celebrate all we've accomplished, as well as the journey ahead. It's time for **First Fest!**

Sunday, September 7

- **9:15am:** Sunday School
- **9:30am:** Worship in the Sanctuary
(Note: There will be no 8am service on September 7)

After the 9:30am worship, let's celebrate together!

Bring your favorite potluck side dish to share (main dish, pie, dessert, and drinks will be provided). Enjoy the Jump House, Mr. Balloon Hands, prize baskets, and BINGO with Nan! This event is for all ages—one worship, one meal! Come meet new friends, reconnect with old ones, and celebrate our community! ①



First Fest



Face painting during First Fest!

Who Will You Reach Out To?

First Fest presents a wonderful opportunity to ask, “Who’s your one?” It’s a simple yet powerful question designed to encourage you to invite someone to join you at First Lutheran and experience First Fest together.

This concept is rooted in the belief that personal invitations are one of the most impactful ways to bring new people into a community of worship. Whether it’s a friend, family member, colleague, or neighbor, anyone with whom you share a meaningful connection can be your “one.”



The goal behind this question is to help spread the message of faith, share the welcoming spirit of First Lutheran, and offer a sense of belonging to those who may be seeking spiritual guidance or a supportive community. By extending

an invitation, you play an important role as an ambassador of your faith, helping to grow the congregation in a personal and meaningful way.

“Who’s Your One” celebrates the power of personal relationships and genuine connections, which are at the heart of First Lutheran’s mission. So, **invite your one**, and let’s grow together! 🌱



Bingo with Nan



Mr. Balloon Hands



Bounce House

MEMORIALS

July 2025



MEMORIALS RECEIVED

Gerald Roehl Memorial

General: Nan Bandt, Vern & Julie Morris, Michael & Nancy Gray, Magda Nelson, Joshua Gray, Don & Joy Lederman, Joan Scafe, Curt Nodolf, George & Patricia Steil, Stuart & Suzanne Hamilton, Steven Falk, Vern & Leola Schulz, Nancy Guse.

GIFTS RECEIVED

ECHO: Frances & Vincent Kessnich, Joseph & Karen Runde, James & Karla Vriezen, Catherine Garvin, Kathryn McCumber, David Romstad.

Foundation: Mark Carson

Visitation Pastor: Terry Hatch Estate

LWR Floods: Susan Mueller

Building: Barb & Terry Ryan



COUNCIL MINUTES

Highlights of July Minutes

These are the highlights from the July 2025 Church Council Minutes. If you would like to read the full minutes please visit: www.flcj.org/council

Financial Report (Tim Drinkwater)

- Giving was above budget for June by \$85,502 (including matching, contributions and loose giving) and total income for June was above budget by \$85,555.
- Giving was above budget by \$73,037 and is now above last fiscal year (including the matching campaign amounts and loose giving) by \$35,593. Total income for July through June is above budget by \$77,087. Income is above what was brought in for the 23-24 fiscal year by \$33,735.

Ministry Report - Pr. Michael

- Visioning Priorities
 - » Implement the new organizational model
 - » Develop a coordinated financial strategy
 - » Discipleship development

New Business

- Assignment of Board/Ministry Team Liaisons
- Ministry Team liaisons and staff will be finalized at the August council meeting.
- Staff Appreciation
 - » October 21, 5-6:30pm (before council meeting)
 - » Taco bar - determine details at a future meeting
 - » Staff and families invited

Unfinished Business

- Organizational Structure Meeting (report out)
 - » Discussion in this area led to the conclusion that we should start by forming the leadership core for each of the new teams. Council will assign liaisons to each of the new teams we are forming, and staff will determine together which staff members will work with each of these teams. The council member and staff representative for each team will then be asked to identify candidates to be their Team Leader.
 - » 12 teams identified
- Annual Meeting June 22 (report out)
 - » The breakfast/meeting/worship order of the morning worked well. We had at least 70 people in attendance for the meeting. All worked well. It's a model that we can build on next year.

Next meeting: Aug 19, 2025, 6:30pm

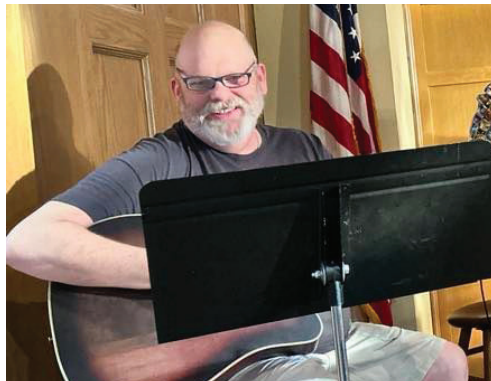
Respectfully Submitted, Elisa Ried, Secretary 

GET TO KNOW THE MUSIC DEPARTMENT

Meet Kurt Saterbak

Let's get to know our drummer/
guitarist/singer/reader/actor –
multi-talented friend, Kurt Saterbak!

I first got to know Kurt on the Worship Team, where he plays several different instruments. I enjoy making music with him, and putting his ideas into play all across the music department. Then we worked together on the Worship Board and Church Council. To say he is multi-talented is an understatement, and we are energized by his creative spirit! Outside of FLC, he recently joined the team at St. Coletta of Wisconsin, where he is their Campaign Director. Before that, he served as the Executive Director for Big Brothers Big Sisters of South Central Wisconsin. He continues to serve on two non-profit boards, and my hope is that he will be a dynamic part of FLC's new Worship Board, which will be rolled out in the fall.



We'll often see Kurt with his wife, Becky, and their family. Their youngest daughter, Arika, just participated with our recent VBS extravaganza! She's now back at St. Olaf, finishing up her undergraduate time. Kurt is very proud of Andie and Arika, and often shares fun experiences they've had together. We are blessed to have Kurt and Becky as a part of the FLC family! 🕊

—Amy Hartsough
Director of Music



MONTHLY HYMN SINGS

Spreading God's Love With Music

If you have the time, we'd love to have you join us at our monthly Pop Up Hymn Sings. This month, it's on Wednesday, September 10, at 1:30pm at Willowick Janesville - 2860 Liberty Lane. Bring your friendship and singing voice, and we supply the rest! All are welcome!



—Amy Hartsough
Director of Music

MONTHLY READINGS

September



Take a few moments each day to spend some time with God reading the Word. You will be amazed to watch your friendship grow.

Sept 7 (Pentecost 13):
Deuteronomy 30:15-20
Psalm 1
Philemon 1-21
Luke 14:25-33

Sept 14 (Pentecost 14):
Exodus 32:7-14
Psalm 51:1-10
1 Timothy 1:12-17
Luke 15:1-10

Sept 21 (Pentecost 15):
Amos 8:4-7
Psalm 113
1 Timothy 2:1-7
Luke 16:1-13

Sept 28 (Pentecost 16):
Amos 6:1a, 4-7
Psalm 146
1 Timothy 6:6-19
Luke 16:19-31 🕊


SEPT CALENDAR

If you have an article idea for the Progress, please submit it to christals@flcj.org by the first of the month so the layout can be planned. The actual articles are due the 10th of the month.

SUN	MON	TUES	WED	THURS	FRI	SAT
	1	2	3	4	5	6
	BUILDING CLOSED	8a BG's (FHL) 9a Knitters (GS) 11a Staff Mtg (302) 1:30p Smart Recovery (302) 4p Witness Bd (FHL) 5p Page Turners (GS)	8:30a Mission Sew (FH) 10a Bible Study (302) 4:30p FLCW (FHL) 6p Worship Team (SA) 7p Youth Gp (YR)	6p Smart Recovery (302)		9a Stamping 4:30p SS Open House
7	8	9	10	11	12	13
FIRST FEST 9:15a SS (SS) 9:30a Worship (SA) 10:45a Lunch & Games (FH)	1p Noteables (CR) 5:30p Building & Grounds Bd (302) 6p Boy Scouts (FH) 8p Centering Prayer (Zoom)	8a BG's (FHL) 9a Knitters (GS) 9a Mary Ruth Cir (FHL) 11a Staff Mtg (302) 1:30p Smart Recovery (302) 4p Worship Bd (GS) 6:30p Youth Bd (YR) TBD Handbells (SA)	PROGRESS ARTICLES SUBMISSION DUE 10a Bible Study (302) 1p Joanna Cir (FHL) 5:30p Family Holiday Fair Meeting (FHL) 6p Worship Team (SA) 7p Youth Gp (YR)	10a Worship (Rock Haven) 11:15a Worship (Oak Park Place) 6p Smart Recovery (302) 6p Stewardship Mtg (301)		7a LWR Box Car Loading (Mad)
14	15	16	17	18	19	20
8a Worship (SA) 9a Masterpiece (YR) 9:15a SS (SS) 9:30a Worship (SA) 10:30a Choir (CR) 10:45a Confirmation Orientation (CH) 4p Confirmation Orientation (CH)	1p Noteables (CR) 6p Boy Scouts (FH) 8p Centering Prayer (Zoom)	8a BG's (FHL) 9a Knitters (GS) 10a Life Together Bd (GS) 11a Staff Mtg (302) 1:30p Smart Recovery (302) 2ap Blood Drive (FH) 6:30p Church Council (301) TBD Handbells (SA)	8:30a Mission Sew (FH) 10a Bible Study (302) 6p Worship Team (SA) 7p Youth Group (YR)	3:30p Second Harvest (Outside) 6p Smart Recovery (302)		8a Bike Ride (FLC)
21	22	23	24	25	26	27
8a Worship (SA) 9a Masterpiece (YR) 9:15a SS (SS) 9:30a Worship (SA) 10:30a Choir (CR) 10:30a New Member Brunch (GS) 4p Cub Scouts (FH) 6:30p Men of Iron (YR)	1p Noteables (CR) 6p Boy Scouts (FH) 8p Centering Prayer (Zoom)	8a BG's (FHL) 9a Knitters (GS) 11a Staff Mtg (302) 1:30p Smart Recovery (302) TBD Handbells (SA)	10a Bible Study (302) 6p Worship Team (SA) 7p Youth Group (YR)	6p Smart Recovery (302)		9a Voice Retreat (Earthsong)
28	29	30				
8a Worship (SA) 9a Masterpiece (YR) 9:15a SS (SS) 9:15a Living With Dementia (CH) 9:30a Worship (SA) 10:30a Choir (CR) 10:45a Family Generosity Event	1p Noteables (CR) 6p Boy Scouts (FH) 8p Centering Prayer (Zoom)	8a BG's (FHL) 9a Knitters (GS) 11a Staff Mtg (302) 1:30p Smart Recovery (302) TBD Handbells (SA)	Abbreviation Key: CH = Chapel CR = Choir Room D = Dawson's Field DR = Discover Room FH = Fellowship Hall FHL = Fellowship Hall Lounge FHK = Fellowship Hall Kitchen GS = Gathering Space P = Portico PL = Parking Lot PP = Palmer Park SA = Sanctuary SS = Sunday School Room YR = Youth Room 301 = Room 301 302 = Room 302			

CHURCH FINANCIALS

The monthly financial report shows the Memorial giving and expenses in the first column, with the actual and budgeted revenue and spending in the last three columns, for July-June 2025. This chart follows the treasurer's report for June in the council minutes.

The full balance sheet and profit and loss reports can be viewed online (www.flcj.org/financials). If you have any questions on the financial reports, please contact Arwen Twitchett at 608.752.7434 x14 or email busadmin@flcj.org. 

Year to Date Financials

July 2024 - June 2025

	Memorials	YTD Actual	YTD Budget	\$ Over/(Under) Budget
Revenue				
Contributions		\$827,456.13	\$757,200.00	\$70,256.13
Rentals		\$32,879.80	\$36,130.00	(\$3,250.20)
Weddings/Funerals		\$775.00	\$1,000.00	(\$225.00)
Other Receipts	\$100.00	\$17,974.18	\$12,750.00	\$5,224.18
4-H Fair	\$4,950.00	\$45,581.87	\$40,500.00	\$5,081.87
Memorials and Gifts	\$150,079.89			
Total Revenue	\$155,129.89	\$924,666.98	\$847,580.00	\$77,086.98
Mission Spending				
Benevolence	\$0.00	\$12,000.00	\$12,000.00	\$0.00
Rostered Leaders	\$90.00	\$165,600.11	\$193,542.00	(\$27,941.89)
Administration	\$6,874.35	\$163,151.22	\$169,430.00	(\$6,278.78)
Buildings and Grounds	\$73,340.38	\$239,564.16	\$250,172.00	(\$10,607.84)
Stewardship	\$0.00	\$2,329.34	\$3,200.00	(\$870.66)
Witness	\$2,698.36	\$515.27	\$750.00	(\$234.73)
Worship	\$11,505.52	\$135,926.90	\$146,459.00	(\$10,532.10)
Youth and Family	\$28,184.80	\$168,353.98	\$169,977.00	(\$1,623.02)
Life Together	\$138.45	\$408.40	\$750.00	(\$341.60)
Memorial Miscellaneous	\$8,711.05			
Total Mission Spending	\$131,542.91	\$887,849.38	\$946,280.00	(\$58,430.62)
Total Net Income (loss)	\$23,586.98	\$36,817.60	(\$98,700.00)	\$135,517.60

CHURCH FINANCIALS

The financials for the first month of the fiscal year, July 2025, are shown below. The weekly need is calculated by averaging the total budgeted expenses for 12 months (from July 2025 through June of 2026). The weekly average YTD is the total income received, divided by the number of weeks in this fiscal year, to date. The graph shows the budgeted expenses in green, the actual

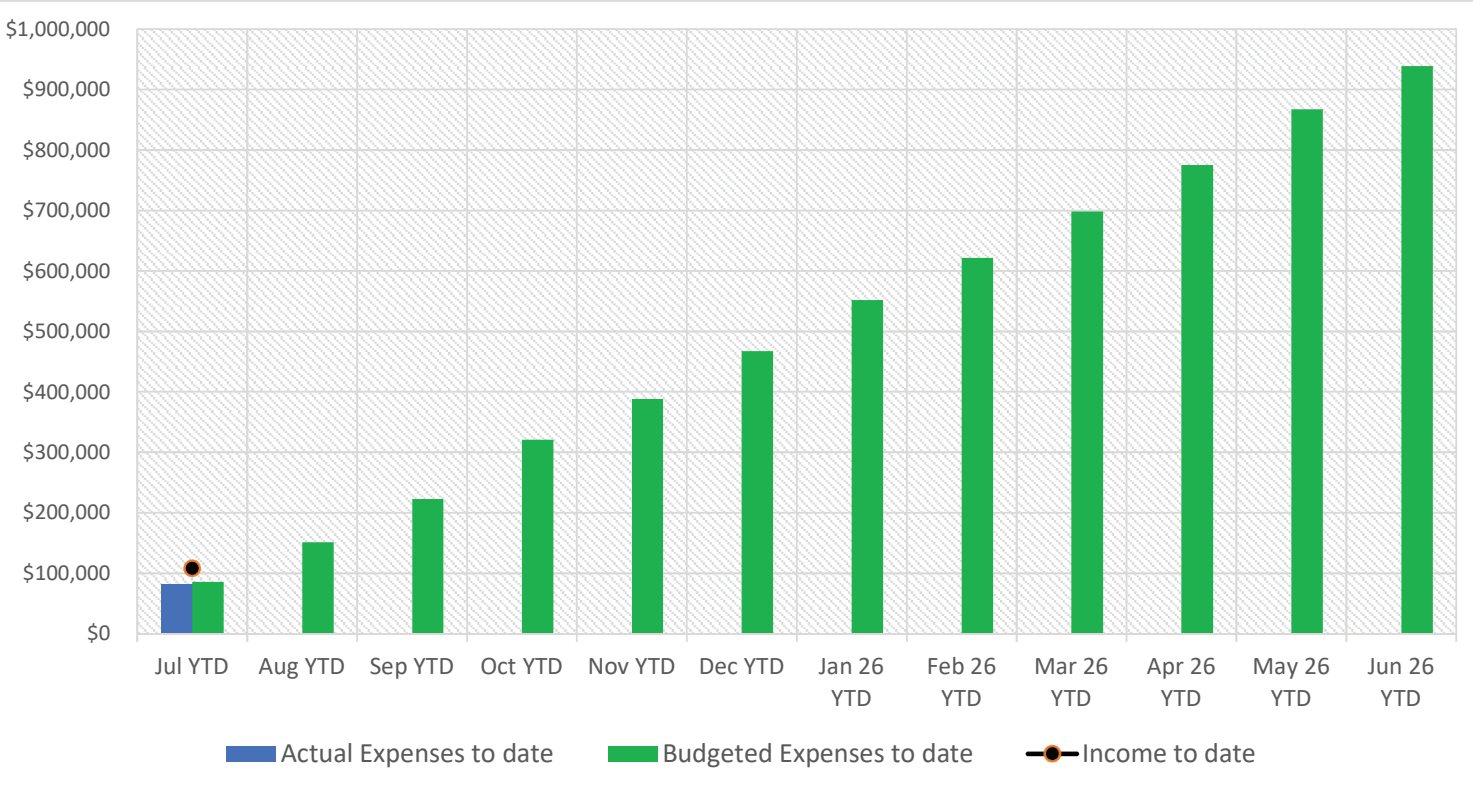
expenses in blue and the monthly income received as a black dot and line. FLC received slightly less than anticipated income from the fair this year. Combining that with lower than budgeted giving, the first month of the fiscal year we were below budgeted income by about \$5,500. Even with income below budget, we start the fiscal year with income higher than expenses in July. ⓘ

July 31, 2025

Weekly need	\$18,045	Budgeted Income: \$113,671	Budgeted Expense: \$85,755
Weekly average YTD	\$27,013.76	Actual Income: \$108,055	Actual Expense: \$82,057

		Received to date	Difference	% Difference
YTD income needed	\$85,755	\$108,055	\$22,300	126%
12 month income needed	\$938,539	\$108,055	(\$830,484)	12%

YTD income and expenses





**FREE
AD
DESIGN**

with
purchase
of this
space

CALL
800-950-9952

**JOHNSON
FINANCIAL GROUP®**

BANKING WEALTH INSURANCE

www.johnsonbank.com

IGNATEK

Your IT Business Partner for Consulting Solutions

TAEVEA BRANDENBURG
Owner/Network Engineer

For more info contact
CS@IGNATEK.COM
WWW.IGNATEK.COM

**ABC
FIRE & SAFETY, INC.**

Quality Fire Safety Services For Over 60 Years

2581 Park Ave. Beloit, WI
abcfirebeloitwi.com

Aaron Ehret • 608-362-1634

**JOHN WICKHEM
Professional
Independent
Service
AGENCY**

HOMEOWNERS | AUTO | LIFE
COMMERCIAL | MEDICARE

608.752.6030
https://www.wickheminsurance.com/

**Apfel Wolfe
Funeral Home Inc.**

Kevin Apfel
James "Jim" Wolfe
Jennifer Apfel

21 S. Austin Rd
PO Box 8186
Janesville, WI 53547

608-752-2444

info@apfelwolfe.com
www.apfelwolfe.com

WE'RE HIRING!

AD SALES EXECUTIVES

BE YOURSELF.
BRING YOUR PASSION.
WORK WITH PURPOSE.

- Paid training
- Some travel
- Work-life balance
- Full-Time with benefits
- Serve your community

Contact us at
careers@4lpi.com or
www.4lpi.com/careers

LET'S GROW YOUR BUSINESS

Place Your Ad Here
and Support Our Parish!

**CONTACT ME
Taylor Hawkes**

thawkes@4LPi.com
(800) 950-9952 x2575

ADT-Monitored Home Security

Get 24-Hour Protection From a Name You Can Trust

- Burglary
- Fire Safety
- Flood Detection
- Carbon Monoxide

ADT Authorized Provider | SafeStreets

833-287-3502

**E & D WATER
WORKS INC.**

Water Softeners
Water Heaters • Bottled Water
Service - Sales - Rentals

Over 60 years of service
www.edwaterworks.com

608-752-4718

**Beloit Regional
HOSPICE**

Member of Beloit Health System

608.363.7421

Committed to our Community.
Dedicated to your Health.

HOSPICE HONORS

SUPPORT OUR ADVERTISERS!

**Place Your Ad Here and
Support our Community!**

Instantly create and
purchase an ad with

AD CREATOR STUDIO



lpicommunities.com/adcreator

**Schneider
FUNERAL DIRECTORS**

Funeral Home, Crematory, & Life Celebration Center

Our family serving your
family over 100 years

www.schneiderfuneraldirectors.com

1800 E. Racine St. 608-754-4444

City Glass Co., Inc.

**More Than Just Glass
and Always Free Estimates**

Specializing in work with
Home and Property Owners,
and Commercial Customers

One call can do it all!
608.754.4411

2536 Center Avenue, Janesville, WI
www.cityglasswisconsin.com

**NEVER MISS
OUR NEWSLETTER!**

SUBSCRIBE

Have our newsletter
emailed to you.

Visit **www.mycommunityonline.com**

WE APPRECIATE OUR ADVERTISERS!

They allow us to print
this bulletin. Thank you!





FIRST FEST

SUNDAY, SEPT 7
9:30AM

608.752.7434 | office@flcj.org



www.flcj.org/event



612 N. Randall Avenue
Janesville, WI 53545

NONPROFIT ORG
U.S. POSTAGE

PAID

JANESVILLE, WI
PERMIT 149



flcjanesville



flcjvl



FirstLutheranChurchJanesville

Worship Schedule: 8am: Sanctuary; 9:30am: Sanctuary & Live-Stream on Facebook & YouTube
9:15am: Sunday School