



PROGRESS

JUNE 2026: VOL. 33, NO. 6

THIS ISSUE:

ANNUAL MEETING

June 14 at 9:30am
Craig High School

SUMMER WORSHIP SCHEDULE

New Time for Second Service

VBS / DAY CAMPS

New Dates and Location

ALL THINGS MUSIC

Try Something New
This Summer

PARKING LOT VOLUNTEERS NEEDED

4-H Rock County Fair
Fundraiser



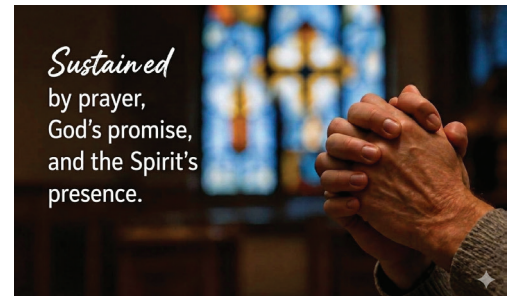
MISSION: Reach, Nourish, and Empower people with the Good News of Jesus Christ!

CALLED FORWARD

The recent Synod Assembly of the South-Central Synod of Wisconsin gathered under the theme "Forward." Our time together was rooted in the word of God to Joshua: "I've commanded you to be brave and strong, haven't I? Don't be alarmed or terrified, because the LORD your God is with you wherever you go." (Joshua 1:9 CEB)

UMC Bishop Daniel Schwerin was guest preacher for the opening worship. He said things that resonate with our circumstances as church today. The opening words of the book of Joshua remind us that Moses had died. As the people approached the Jordan River, the boundary to the promised land, they were experiencing grief for the loss of their leader. Bishop Schwerin told a story of grief from his own childhood, noting that grief cannot easily imagine a future. How will the people cross the Jordan into a new future without their leader, Moses? Going forward requires imagination. In their grief they lack the ability to imagine. Still, God calls Joshua and all the people to go forward.

The whole church today is already at a point of transition, full of challenge and uncertainty. And now, I think of our flood-devastated church building.



Sustained
by prayer,
God's promise,
and the Spirit's
presence.

612 N Randall Ave, Janesville, WI 53545

608.752.7434 www.flcj.org

Office Hours: Monday-Thursday 8:30am-4pm; Friday 8:30am-Noon



Pastor Michael

mmueller@flcj.org
262.930.2072

During the first month after the flood, we were consumed with immediate needs: cleaning out the wreckage, protecting all that was not destroyed, and keeping our ministry going. When we lifted our eyes toward the future, however, we were confronted by a Jordan crossing. The flood has pressed upon us the need to imagine a creative future. Should we spend millions to put the building back just the way it was? Or could we imagine and envision what new things God might be doing? Could we see this as an opportunity to design our building to better serve our mission to be the love of Christ for our world? What might that look like?



That's where I can get stuck. The grief and all the decisions required by this disruption have been overwhelming. I have such little freedom for creative imagination that relatively simple challenges can confuse me. Maybe you've had a similar experience.

God's word of hope is that we're not left alone in fear and grief. I won't desert you or leave you, God says to Joshua. Be brave and strong. I will be with you wherever you go. Jesus echoes this same promise when he sends his disciples into the world, saying "remember, I am with you always, to the end of the age."

We've experienced that promised presence in many ways during this time of disruption. I felt it among friends from across our synod at the Assembly. Many asked how we are doing. They know the loss we have experienced and the challenges we are facing. They are praying for us. We

are connected through relationship to the people and resources of our neighboring congregations, our synod, and the whole church. We see that promised presence in Maryn Olson, the face for us of Lutheran Disaster Response, bringing the church alongside us, so that we can be strong and courageous to move forward.

It's there too in the team at Leighton Ford Ministries, who have continued to accompany us since our visioning process in 2020. They are providing mentoring support to help us seize this opportunity and find a path forward to discern wisely and take strong, courageous action toward the new, life-giving future that God is inviting.

So many signs of presence! We can trust the Spirit to give imagination and courage to cross this Jordan into a new future. We are not alone. Forward, then, in trust! 🕊️

ANNUAL MEETING

June 14 at 9:30am, Craig High School

Our Annual Congregation Meeting is scheduled for Sunday, June 14, 2026. To avoid disrupting the worship schedule at Good Shepherd, we will hold the meeting at Craig High School after our 8am drive-in worship.

The morning schedule looks like this:

- **8am:** Worship in the parking lot at First Lutheran
- **9am:** Travel to Craig High School. Enter the main doors off Randall Ave and proceed to the cafeteria. Coffee and refreshments will be ready to enjoy.
- **9:30am:** Annual Meeting begins.

The meeting agenda will include some of the usual items that are important to our life together:

- **2026-27 Budget:** We will review and approve the financial plan to support First Lutheran Church's mission and ministries for the upcoming year.
- **Election of New Council Members:** New leaders are vital to our continued growth and outreach. Five new members were appointed to fill open positions on the Council during the past year: Jon Bjoin, Carrie Chesebro, Tom Dorscheid, Tammy Eckley, and Christina Zink. They have engaged well and are ready

to continue serving, but they need to be confirmed now by congregational vote. Join us in electing these Council members to keep guiding our church forward.

- **By-Law Updates:** New updates to our bylaws reflect the changes made last year in our organizational structure. A link to those updates was emailed on May 15, and physical copies are available to pick up at Sunday worship. Bylaw changes must be approved by congregational vote.

After the usual business, we will take a short break and then continue with a second part of the meeting to address the next steps in our building recovery process.

As always, your voice matters. The April 17 flood disrupted our plans in many ways. This year's annual meeting is uniquely important, as we chart a way forward to restore what has been damaged and continue building a vibrant life together in service to our community. Whether you've been a part of our church community for years or are new to the congregation, we encourage you to attend and be a part of shaping our future together. 📍

HIKING CLUB

Starting June 17



This summer, First Lutheran Student Ministries is **inviting everyone** to be part of an exciting **Hiking Club** filled with outdoor adventure, friendship, and fun. The group will meet on **Wednesdays from 6:30-8pm**, beginning at First Lutheran Church, Door 8.

You can look forward to **easy to moderate hikes ranging from 1-2 miles**, along with campfires after each hike and plenty of time to connect with each other. The Hiking Club schedule includes hikes on **June 17 & 24, July 8 & 15**.

For questions or more information, contact Eric at 608.290.7083 or eengen@flcj.org, or Renee at 608.359.9685 or rengen@flcj.org. 📍

ANNUAL MEETING

PARKING LOT VOLUNTEERS NEEDED

Fair Week



We're looking for volunteers to help out in the parking lot during Fair Week, July 28–Aug 2! Shifts are just 3 hours long, and we have 205 time slots available in a variety of roles, including:

- **Cashiers:** Collect parking fees and monitor various parking passes.
- **Parking Assistants:** Direct cars in and out of the lot, keep lanes clear, and guide guests to parking stalls.
- **Point Person:** Direct cars to Parking Assistants and direct cars to the exit

If you enjoy being outdoors and meeting people, this is a fun and rewarding way to support FLC. We'd love to have you join us!

Online sign-ups:

tinyurl.com/yd99nswx

Contact: Mike Drinkwater,
608.359.1626 📞

VBS / DAY CAMPS

New Dates and Location

This year's program will be held at Craig High School.

We've also adjusted the dates to **August 3-5**. That's right — three days instead of four... but don't worry, we're packing all the excitement of four days into three unforgettable days!

We're looking for volunteers to join the **Hospitality Team** & help families find their way from the Craig parking lot to check-in and activity areas.

We've been busy this spring! Thanks to Stacey Adams, Sierra Spiering, Ben Spiering, and Kent Shea, counselors have been training weekly in:

- Positive classroom management
- CPR
- Standards of behavior
- Safety procedures
- VBS and Day Camp themes

Be sure to:

- Register using the QR code below or this link: flcj.org/vbs
- Check out our donations list at the QR code below
- Join our 21-Day Prayer Challenge for VBS and Day Camp by contacting Renee 📞



Scan to check out our donation list



Scan to Register for
VBS / Day Camps

ALL THINGS MUSIC

Try Something New This Summer

The **Hand Bell Ensemble** had a wonderful year playing our beautiful, regulated, and repaired hand bells!



This summer we hope to meet 2-3 times for fellowship, sight reading for fun, and trying out new techniques in a relaxed setting.

Stay tuned for more details via email and social media! 📧

Join us for our monthly **Hymn Sing** on Wed, June 10, at 2pm at Huntington Place, 3801 N Wright Rd in Janesville. Spend the afternoon singing beloved hymns, sharing fellowship, and enjoying time together in community. Whether you have attended before or are joining us for the first time, all are welcome. We hope you'll come lift your voice with us! 📧



Have you ever wanted to sing with a choir but weren't sure where to start? Our **Drop In Choir** is the perfect opportunity! Join us for our second Drop In Choir on Sunday, June 28, at Good Shepherd. We'll gather at 9:20am for a relaxed rehearsal and then sing together during the 10am worship service.

This is a fun and welcoming experience for anyone who enjoys music, whether you've sung in choirs for years or have never sung with a group before. No experience is necessary—just come ready to sing, meet new people, and make a joyful noise together. All are welcome! 📧



MEN'S SOFTBALL

2026 Schedule



Come and cheer on the First Lutheran men's softball team this summer! All games are on Mondays at Dawson Softball Complex, 920 Beloit Ave, Janesville.

Any questions, contact Eric at eengen@flcj.org.

- **June 1 - 8pm**
New Life
- **June 8 - 9pm**
Faith Community Church
- **June 15 - 6pm**
Roxbury
- **June 22 - 9pm**
Bethel CurveBalls
- **June 29 - 9pm**
Oak Grove
- **July 13 - 7pm**
Bethel Dingers
- **July 20 - 8pm**
Central Christian
- **July 27 - 7pm**
Resonate Reborn
- **Aug 3 - 8pm**
Hope Church 📧

MONTHLY BIKE RIDES

Come Ride with First Lutheran



Join us on the third Saturday of the month for a bike ride. For all rides, except the Pie Ride, we will meet at FLC at 8am. Here is the link to the Janesville Trail Map <https://tinyurl.com/386af8ua>

All rides are approximately 20 miles round trip and we travel at an average speed of 10 miles/hour.

- **June 20 - Pie Ride**
Meet on Festival Street. Register: pieride.org
- **July 18**
Take the bike trail north to Milton. Refreshments at The Milton Family Restaurant.
- **August 15**
Head South on the bike trail to Riverside Park. We can see Michael Palmer's work on the old brewery along the way.
- **September 19**
Take the bike trail south through Palmer and Monterey Parks, follow the river past the Water Treatment Plant to Afton. 📍

THANK YOU, CHURCH

We're Grateful for You

Thank You for Supporting Our Worship Life!

Worship is at the heart of our life together in faith. It is where we gather as a community, hear God's word, share in Holy Communion, and are renewed and sent out into the world to serve. Week after week, so many faithful volunteers help make our worship services welcoming, meaningful, and spirit-filled.

As we transition to our summer schedule, we want to extend our heartfelt thanks to all of the ushers, greeters, lay readers, and communion servers who have served since last September. Your willingness to share your time and gifts has blessed our congregation in countless ways.

Thank you for serving with joy, care, and hospitality.

Thank You, Coffee Hour Hosts!

A special thank you as well to the many Coffee Hour hosts who have provided delicious treats and warm fellowship during our Sunday morning coffee hours throughout the year. Because of your hospitality, our church has been a place to reconnect with longtime friends, welcome visitors, and build new friendships within our faith community. Your generosity and kindness are deeply appreciated.

Thank you to everyone who helps make our church a welcoming and caring community. 📍





2026 CROP Hunger Walk Participants

CROP HUNGER WALK

Exceeding Expectations

Wow—what a beautiful day it was on Sunday, April 26, for the 49th Annual Janesville CROP Hunger Walk. More than 100 people came together to raise awareness for those facing hunger and food insecurity locally, nationally, and around the world.

This year, First Lutheran Church set two goals for the walk: to gather a team of at least 35 walkers and to raise \$6,000. As of April 26, the First Lutheran Church team included 26 walkers and had raised an incredible \$7,047.

What a powerful reflection of generosity and compassion within the Janesville community. Altogether, the 2026 Janesville CROP Hunger Walk raised \$55,000.

Thank you from the bottom of our hearts to everyone who walked, donated, volunteered, and supported this year's CROP Hunger Walk. Your kindness and generosity are making a difference. 🙏

SUMMER WORSHIP SCHEDULE

Now-Aug 30

- 8am:** Drive-In at First Lutheran
- 9am:** Coffee Hour by the Parsonage
- 10am:** Worship at Good Shepherd
- 10am:** Sunday School (No Sunday School in July)
- 11am:** Coffee Hour with Good Shepherd

Communion is served at both services.



Enjoy the 10am service from home on Facebook & YouTube. 🙏

STRONGER

PRAYER AFTER THE FLOOD

Lord God,

You see us right now—soaked, shaken, and standing in a building that doesn't look like it did a few days ago. Our first floor is stripped, our belongings are gone, and our hearts feel the weight of loss. Yet we come to You, because where else would we go? You are still God. You are still good. You are still in control.

We confess that part of us wishes You had simply stopped the waters. You could have. You could have spared this church from the flood. And yet, in a way we don't fully understand, this might be the very answer to prayers we've been praying: "Lord, show us how to use this building to truly be the church and serve our community." So here we are—standing in the middle of that answer, even if it doesn't look like what we expected.

Remind us, Lord, of the Egyptians along the Nile, who would pray for the floodwaters to rise so that the land could be nourished and crops could grow. What looked like destruction from one angle was actually provision from another. Where others might see only damage, You can be bringing new life. Let this flood, as painful as it is, become the very thing that prepares the soil for a new season of planting, serving, and loving our neighbors.

Help us to "get in the boat," Lord—to stop standing on the shore of fear and instead step into what You are doing. Let this flood cleanse and renew our spirits. Wash away our complacency, our comfort, our attachment to things that don't last. If this is our "Jonah moment," then we don't want to run from Your call. We don't want to flee from what You're asking of us. We want to turn toward You, surrender, and say, "Here we are, Lord. Send us."

Remind us that this building is not the church—we are. We remember the words of Jesus in Matthew 16:18, when He said to Peter, "You are Peter, and on this rock I will build my church, and the gates of hell shall not prevail against it." The gates of hell cannot prevail, and neither can floodwaters. The church is not drywall, carpet, or furniture. The church is Your people, built on the rock of Christ, and nothing can wash that away.

So, Lord, help us not to fear what was lost. Help us to trust You for what we need next. You know every chair, every classroom, every book, every memory that was on that first floor. You saw it all. And You also see what's coming—what we cannot yet see. Teach us to walk by faith and not by sight, believing that as Isaiah reminds us, by the blood of Christ and the will of God, no weapon formed against us shall prosper. The flood is not a weapon that will defeat us—it is a moment that You can use to shape us.

Water is not our enemy. You created water. You parted the Red Sea. You calmed the storm. You walked on the waves. You washed Your disciples' feet. You gave us baptism as a sign of death to the old and rising into new life. Let us see this water through Your eyes.

Water reflects—may we see ourselves and our calling more clearly in this moment. Water can be still—teach our hearts to be still and know that You are God. Water sparkles in the light—let Your light shine on this situation so that hope glimmers in the midst of loss. Water expands—stretch our faith, our imagination, and our willingness to serve beyond what we thought possible. Water flows and lets go—help us release what we've been clinging to and move with Your Spirit. Water spirals with gravity and wind and can go wild—when life feels chaotic, anchor us in Your unshakable presence. Water can carve a new path—Lord, carve a new path for this church, for this building, for this community.

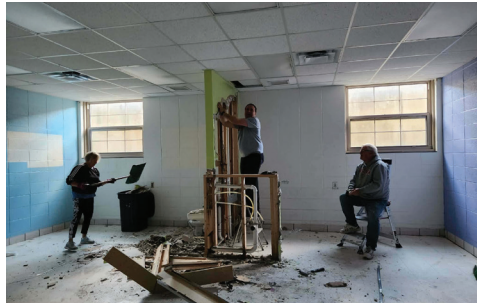
We have been praying for a way to use this building to be the church and to serve our community more deeply. So now, in faith, we dare to ask: Could this be that way? Give us boldness to think differently, to dream bigger, to love more sacrificially. Help us to think boldly, believe deeply, and respond openly.

Lord, take this flood and turn it into a testimony. Take this loss and turn it into love poured out. Take this disruption and turn it into direction. Lead us on the path You are creating—one step at a time.

We trust You. We belong to You. We are Your church. In the name of Jesus, our Rock and our Redeemer, Amen. ☪

—Lori Stottler

TOGETHER



MEMORIALS

April 2026



MEMORIALS RECEIVED

Kathy Engstrom Memorial

General: Kaeli Bauman, Rebecca Kelly, First Lutheran Church Women

Building Fund: Jeanette Beard, Monica Lloyd, Mary Geng, Jill Housker, Ann Salmon

Donna Liston Memorial

General: Jeanette Beard

Jack Kislia Memorial

General: Doug & Marcia Snyder

GIFTS RECEIVED

ECHO: Jim & Karla Vriezen, Vincent & Frances Kessenich, Lois Burggraf, Magda Nelson, Judith Grunzel, Catherine Garvin
Building Fund: Terry & Barb Ryan

Masonry Match: First Lutheran Church Women, Peg & Mat Haeger, Christine Goepfert, Darlene Becker

Flood Relief: Karen Kirkpatrick, Darlene Becker, Fred Bobolz, Doug & Donna Woodman, David Glende, Kathy Dorscheid, Alan Knutson, Shirley Pate, Barb & Terry Ryan ☺

COUNCIL MINUTES

Highlights of May Minutes

These are the highlights from the May 2026 Church Council Minutes. If you would like to read the full minutes please visit: www.flcj.org/council

- Council liaisons assigned to Foundation Board and Communications Team
- Michael Palmer approved as new member of Building and Grounds Team
- All Teams Meeting planned for June 20 will be postponed.
- Approval given to retain a professional to explore potential sources of revenue at no cost to the church.
- Developed plans for Special Congregation Meeting on May 26.
- Approved 2026-27 budget for presentation at Annual Meeting on June 14.

Next meeting: June 2, 2026, 6:30pm

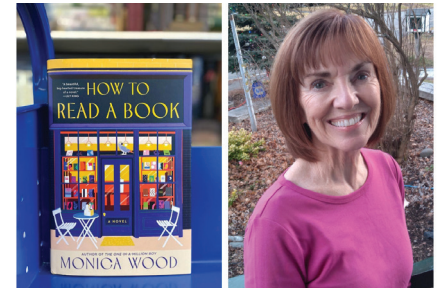
Respectfully submitted by Pr. Michael Mueller ☺

PAGE TURNERS

Upcoming Books

The Page Turners meet on the first Tuesday of each month at 5pm at Karen Grimsrud's home. Come every month or simply when you can—everyone is welcome! **Contact:** Sally Schuenke, 608.754.0407

June 2: *How to Read a Book* by Monica Wood ☺



PRAYER CHAIN

The Power of Prayer

There is nothing like the power of prayer.

FLC has a prayer chain and we would like you to be a part of it. We have lost a few members, and are looking to lengthen the chain. We have two groups—those who prefer to be called and those who like to be notified by email. Those on the phone list pass the information on to the next person on the list. Those on the email list don't have to pass the message on. They just have to pray. If you are interested in being a part of the chain, please contact Sally Schuenke at 608,754,0407. Please prayerfully consider being a part of this mission. ☺





SUMMER

FIRST LUTHERAN STUDENT MINISTRIES

**630PM
800PM**
6th-12th grade

JUNE 17TH: HIKING CLUB
24TH: HIKING CLUB

JULY 8TH: HIKING CLUB
15TH: HIKING CLUB
22ND: DEVIL'S LAKE
28TH: 4HFAIR

AUGUST 3RD: DAYCAMP/VBS
5TH: SWIM PARTY
12TH: COOKOUT

Join us Wednesdays for hiking, friendship, and time outdoors!

Location: First Lutheran Church, Door 8

What to expect: Easy to moderate hiking. 1-2 miles each week. Campfire after every hike. Friends welcome!

Celebrate a summer of hiking, friendships, exploring, and fun with a special cookout on August 12th.

ANY QUESTIONS CONTACT:
(H.S.) ERIC 608-290-7083, EENGEN@FLCJ.ORG / (M.S.) RENEE 608-359-9685, RENGEN@FLCJ.ORG



MORE 2026 GRADUATES



CODY MEASNER



TYLER JONES



MONTHLY READINGS

June



Take a few moments each day to connect with God through His Word. You'll be amazed at how your relationship with Him deepens and grows.

June 7 (Pentecost 2):

Hosea 5:15—6:6
Psalm 50:7-15
Romans 4:13-25
Matthew 9:9-13, 18-26

June 14 (Pentecost 3):

Exodus 19:2-8a
Psalm 100
Romans 5:1-8
Matthew 9:35—10:8 [9-23]

June 21 (Pentecost 4):

Jeremiah 20:7-13
Psalm 69:7-10 [11-15] 16-18
Romans 6:1b-11
Matthew 10:24-39

June 28 (Pentecost 5):

Jeremiah 28:5-9
Psalm 89:1-4, 15-18
Romans 6:12-23
Matthew 10:40-42 ①

JUNE CALENDAR

If you have an article idea for the Progress, please submit it to christals@flcj.org by the first of the month so the layout can be planned. The actual articles are due the 10th of the month.

SUN	MON	TUES	WED	THURS	FRI	SAT
	1	2	3	4	5	6
	8p Centering Prayer (Zoom)	8a BG's 9a Knitters (FSH) 11a Staff Mtg (GS) 5p Page Turners (KH)	8:30a Mission Sew (FSH) 10a Bible Study (GS) 4:30p FLCW (FSH) 6p Worship Team (GS) 7p Youth Group (GS)	10a Practicing the Way (GS) 3p Communication Team (Zoom)		
7	8	9	10	11	12	13
8a Drive-In (PL) 9a Coffee Hour (P) 10a Worship (GS) 10a SS (GS) 11a Coffee Hour (GS) 5:30p Practicing the Way (GS)	5:30p Building & Grounds Team (GS) 8p Centering Prayer (Zoom)	8a BG's 11a Staff Mtg (GS) 5:30p Worship Collective (GS) 6:30p Youth & Fam Team (GS) 7p Discipleship Team (GS)	PROGRESS ARTICLES DUE 10a Bible Study (GS) 2p Hymn Sing (HP) 6p Worship Team (GS) 7p Youth Group (GS)	10a Worship (Rock Haven) 11:15a Worship (Oak Park Place)		9a Stamping (GS)
14	15	16	17	18	19	20
8a Drive-In (PL) 9:30a Annual Meeting (CHS) 5:30p Practicing the Way (GS)	9a Safe Families (GS) 8p Centering Prayer (Zoom)	8a BG's 9a Knitters (FSH) 11a Staff Mtg (GS) 6:30p Church Council (GS)	8:30a Mission Sew (FSH) 10a Bible Study (GS) 6p Worship Team (SA) 7p Youth Group (GS)	3:30p Second Harvest (PL)		
21	22	23	24	25	26	27
Kentucky Service Trip 8a Drive-In (PL) 9a Coffee Hour (P) 10a Worship (GS) 10a SS (GS) 11a Potluck (GS)	Kentucky Service Trip 8p Centering Prayer (Zoom)	Kentucky Service Trip 8a BG's 11a Staff Mtg (GS)	Kentucky Service Trip 10a Bible Study (GS) 6p Worship Team (GS)	Kentucky Service Trip	Kentucky Service Trip	Kentucky Service Trip 9a Leadership Mtg (GS)
28	29	30				
8a Drive-In (PL) 9a Coffee Hour (P) 10a Worship (GS) 10a SS (GS) 11a Coffee Hour (GS)	8p Centering Prayer (Zoom)	8a BG's 9a Knitters (FSH) 11a Staff Mtg (GS)				


Abbreviation Key:

B = Backyard
CHS = Craig High School
FSH - First Senior Housing
GS = Good Shepherd
HP - Huntington Place
KH = Karen Grimsrud's Home
MH = Member's Homes
P = Parsonage
PL = Parking Lot
TBD - To Be Determined

All locations are correct at time of printing.
Please check with your group leader for the most up-to-date locations.
Thank You!

CHURCH FINANCIALS

The monthly financial report shows the Memorial giving and expenses in the first column, with the actual and budgeted revenue and spending in the last three columns, for July-March 2026. This chart follows the treasurer's report for March in the council minutes. The financial reports are re-organized to reflect the transition to the new teams. The Discipleship Development, Inclusion and Integration, Relationship

Building, Worship and Youth and Family Engagement teams fall under the category of church programs. The full balance sheet and profit and loss reports can be viewed online (www.flcj.org/financials). If you have any questions on the financial reports, please contact Arwen Twitchett at 608.752.7434 x14 or email busadmin@flcj.org. 

Year to Date Financials July - March 2026

	Memorials	YTD Actual	YTD Budget	\$ Over/(Under) Budget
Revenue				
Contributions		\$563,337.88	\$633,542.25	(\$70,204.37)
Rentals		\$29,964.68	\$30,525.68	(\$561.00)
Weddings/Funerals		\$1,425.00	\$800.00	\$625.00
Other Receipts		\$60,056.92	\$35,993.72	\$24,063.20
4-H Fair		\$41,570.96	\$44,300.00	(\$2,729.04)
Memorials and Gifts	\$120,833.62			
Total Revenue	\$120,833.62	\$696,355.44	\$745,161.65	(\$48,806.21)
Mission Spending				
Benevolence		\$9,000.00	\$9,000.00	\$0.00
Personnel	\$5,162.54	\$469,530.51	\$470,849.17	(\$1,318.66)
Administration	\$83.78	\$27,900.38	\$32,910.51	(\$5,010.13)
Buildings and Grounds	\$33,556.01	\$130,048.41	\$136,106.50	(\$6,058.09)
Communication	\$971.70	\$4,380.45	\$5,745.00	(\$1,364.55)
Church Programs	\$15,653.77	\$34,983.80	\$43,484.99	(\$8,501.19)
Community Connections	\$2,672.50	\$95.51	\$260.00	(\$164.49)
Memorial Miscellaneous	\$1,335.15			
Total Mission Spending	\$59,435.45	\$675,939.06	\$698,356.17	(\$22,417.11)
Total Net Income (loss)	\$61,398.17	\$20,416.38	\$46,805.48	(\$26,389.10)

CHURCH FINANCIALS

The financials for the fiscal year to date, July-April 2026, are shown below. The weekly need is calculated by averaging the total budgeted expenses for 12 months (from July 2025 through June of 2026). The weekly average YTD is the total income received, divided by the number of weeks in this fiscal year, to date. The graph shows the budgeted expenses in

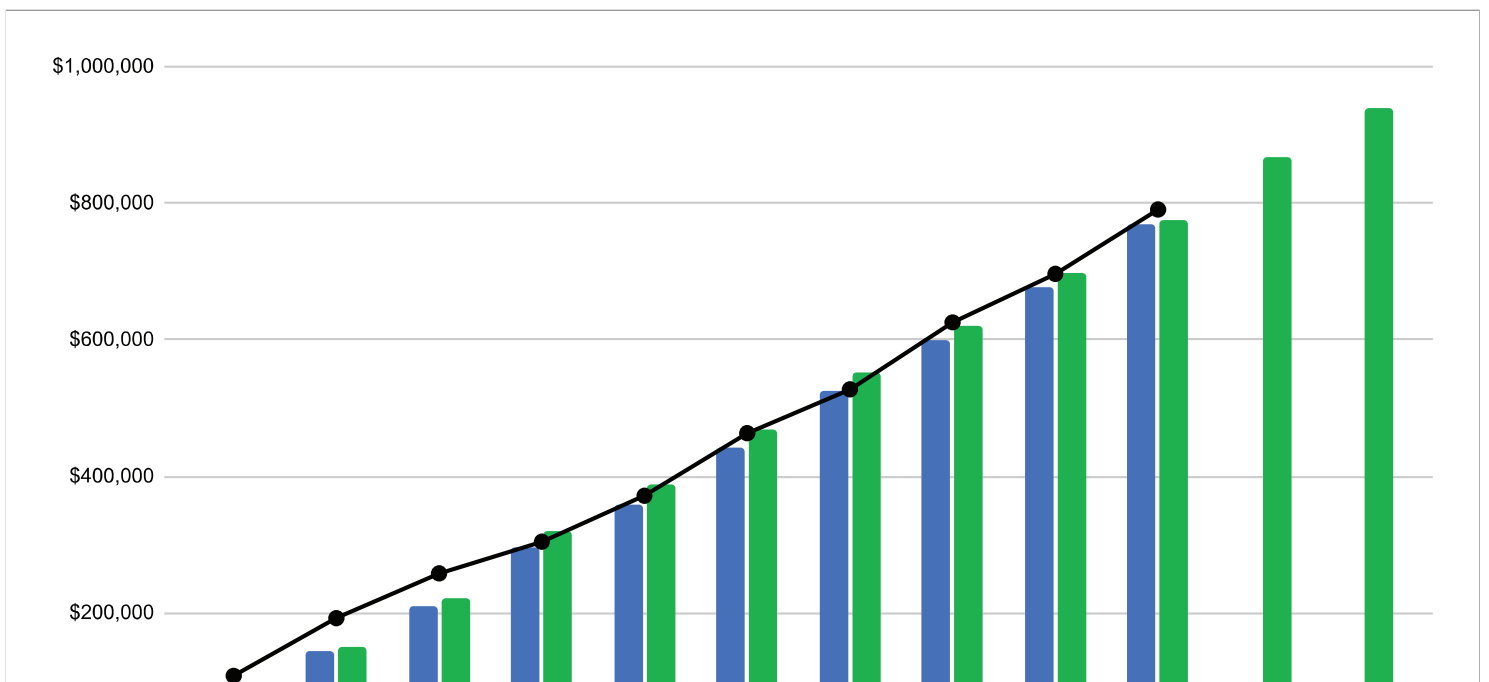
green, the actual expenses in blue and the monthly income received as a black dot and line. Total income for July through April was below budget, however, regular budgeted expenses remain slightly lower than anticipated, so year to date net income continues to be higher than monthly expenses. [🔗](#)

April 30, 2026

Weekly need	\$18,198	Budgeted Income: \$79,573	Budgeted Expense: \$101,047
Weekly average YTD	\$17,569	Actual Income: \$94,241	Actual Expense: \$92,121

		Received to date	Difference	% Difference
YTD income needed	\$774,925	\$790,597	\$15,672	102%
12 month income needed	\$938,539	\$790,597	(\$147,942)	84%

YTD income and expenses





FREE AD DESIGN

with purchase of this space

CALL 800-950-9952

JOHNSON FINANCIAL GROUP
BANKING WEALTH INSURANCE

www.johnsonbank.com

IGNATEK
Your IT Business Partner for Consulting Solutions
TREVA BRANDENBURG
Owner/Network Engineer
For more info contact **CS@IGNATEK.COM**
www.IGNATEK.COM

ABC FIRE & SAFETY, INC.

Quality Fire Safety Services For Over 60 Years
2581 Park Ave. Beloit, WI
abcfirebeloitwi.com
Aaron Ehret • 608-362-1634

JOHN WICKHEM AGENCY
Professional Independent Service
EST. 1988

HOMEOWNERS | AUTO | LIFE
COMMERCIAL | MEDICARE
608.752.6030
https://www.wickheminsurance.com/

WE'RE HIRING!
AD SALES EXECUTIVES

BE YOURSELF.
BRING YOUR PASSION.
WORK WITH PURPOSE.

- Paid training
- Some travel
- Work-life balance
- Full-Time with benefits
- Serve your community

Contact us at careers@4lpi.com or www.4lpi.com/careers



LET'S GROW YOUR BUSINESS
Place Your Ad Here
and Support Our Parish!

CONTACT ME
Taylor Hawkes

thawkes@4LPI.com
(800) 950-9952 x2575

Apfel Wolfe Funeral Home Inc.

Kevin Apfel
James "Jim" Wolfe
Jenifer Apfel

21 S. Austin Rd
PO Box 8186
Janesville, WI 53547

608-752-2444

info@apfelwolfe.com
www.apfelwolfe.com

ADT-Monitored Home Security
Get 24-Hour Protection From a Name You Can Trust

- Burglary
- Fire Safety
- Flood Detection
- Carbon Monoxide

Authorized Provider | SafeStreets

833-287-3502



E & D WATER WORKS INC.

Water Softeners
Water Heaters • Bottled Water
Service - Sales - Rentals

Over 60 years of service
www.edwaterworks.com
608-752-4718

Beloit Regional HOSPICE
Member of Beloit Health System
608.363.7421

Committed to our Community.
Dedicated to your Health.

HOSPICE HONORS

SUPPORT OUR ADVERTISERS!

Place Your Ad Here and Support our Community!

Instantly create and purchase an ad with

AD CREATOR STUDIO



lpicommunities.com/adcreator




Schneider FUNERAL DIRECTORS
Funeral Home, Crematory, & Life Celebration Center

Our family serving your family over 100 years

www.schneiderfuneraldirectors.com
1800 E. Racine St. 608-754-4444

City Glass Co., Inc.

More Than Just Glass and Always Free Estimates

Specializing in work with Home and Property Owners, and Commercial Customers

One call can do it all!
608.754.4411

2536 Center Avenue, Janesville, WI
www.cityglasswisconsin.com



NEVER MISS OUR NEWSLETTER!

SUBSCRIBE

Have our newsletter emailed to you.

Visit www.mycommunityonline.com




WE APPRECIATE OUR ADVERTISERS!

They allow us to print this bulletin. Thank you!



VOLUNTEERS NEEDED

We are looking for volunteers for the Rock Co 4-H Fair!
Help us make this the BEST year ever!



FIRST
LUTHERAN
CHURCH

→ SIGN UP

■ flcj.org

■ 608.752.7434

■ office@flcj.org



FIRST
LUTHERAN
CHURCH

612 N. Randall Avenue
Janesville, WI 53545

NONPROFIT ORG
U.S. POSTAGE

PAID

JANESVILLE, WI
PERMIT 149



flcjanesville



flcjvl



FirstLutheranChurchJanesville

Worship Schedule: 8am: Sanctuary; 9:30am: Sanctuary & Live-Stream on Facebook & YouTube
9:15am: Sunday School